

# Art History

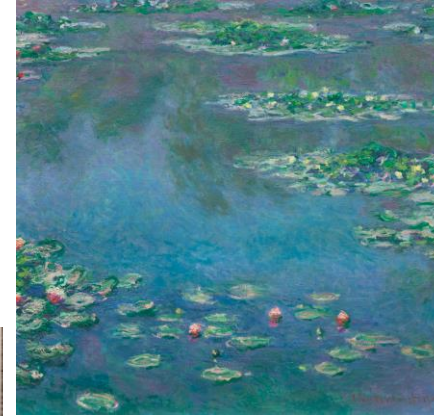
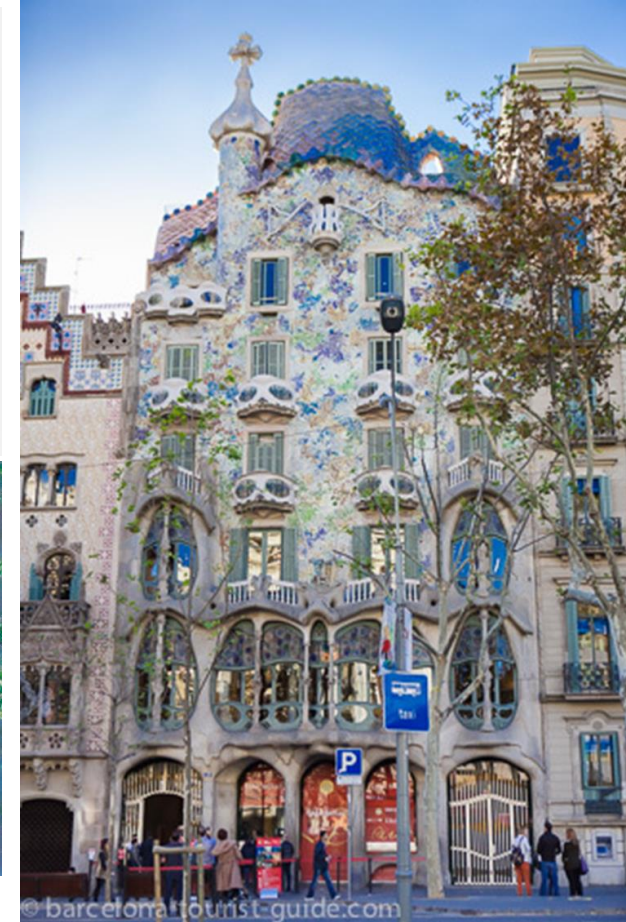
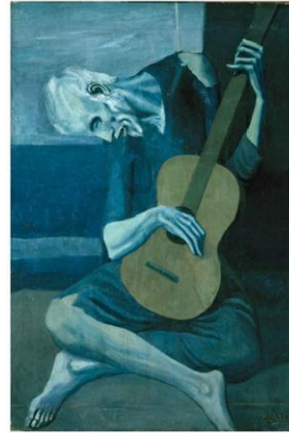
Visual Art 1- Beginner

Artists 11-20

Must recognize, know artist last name and title



# How important is color to an artist?



What are some repeating symbols or motifs you see in Burton's work?

Jack, Sally and Zero, 1993. *Nightmare Before Christmas*. © 1993. *Disney*.



# 11- Roy Lichtenstein



## *Stepping Out*

1978

American, New York

Medium: Oil and Magna on canvas

Dimensions: 86 3/4 × 70 1/8"

Describe what you see.

What are primary colors ?

Triadic color scheme?

<http://www.metmuseum.org/collection/the-collection-online/search/482133>



# 12- Vincent van Gogh

## *The Starry Night*

1889

Saint Rémy, France

Medium: Oil on canvas

Dimensions: 29 x 36 1/4"

Which elements of art  
are dominant?  
Exactly what colors are  
repeated?





# 13- Pablo Picasso



## ***The Old Guitarist***

1904

Spanish, worked in France

Medium: Oil on panel

Dimensions: 48 3/8 x 32 1/2"

What mood or message does this work communicate? Why do you think that?

What is monochromatic?

# 14- Edvard Munch

## *The Scream*

1895

Medium: Pastel on board

Dimensions:

Is this good art?

What about this?

[Ink Master???](#)



<http://www.moma.org/visit/calendar/exhibitions/1330>



# 15-Antonio Gaudi

## *Casa Battlo*

1907

Barcelona

Art Nouveau took inspiration from organic forms and nature. How are nature's colors used?

<https://www.casabattlo.es/en/gallery/officials/?id=79930>



© barcelona-tourist-guide.com



© barcelona-tourist-guide.com



# 16- Michelangelo

***Libyan Sybil***, Sistine Chapel

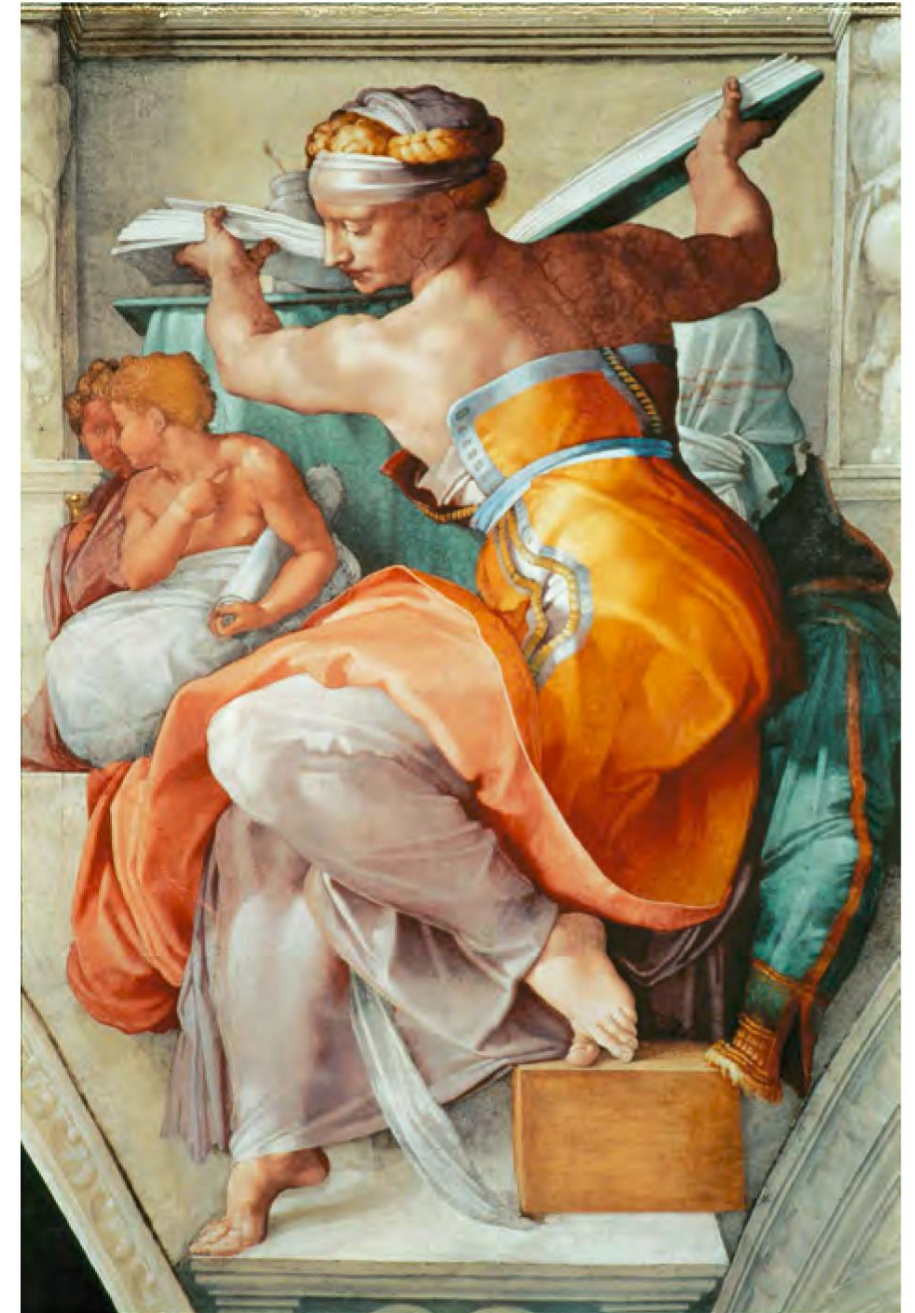
1512

Vatican City

Fresco



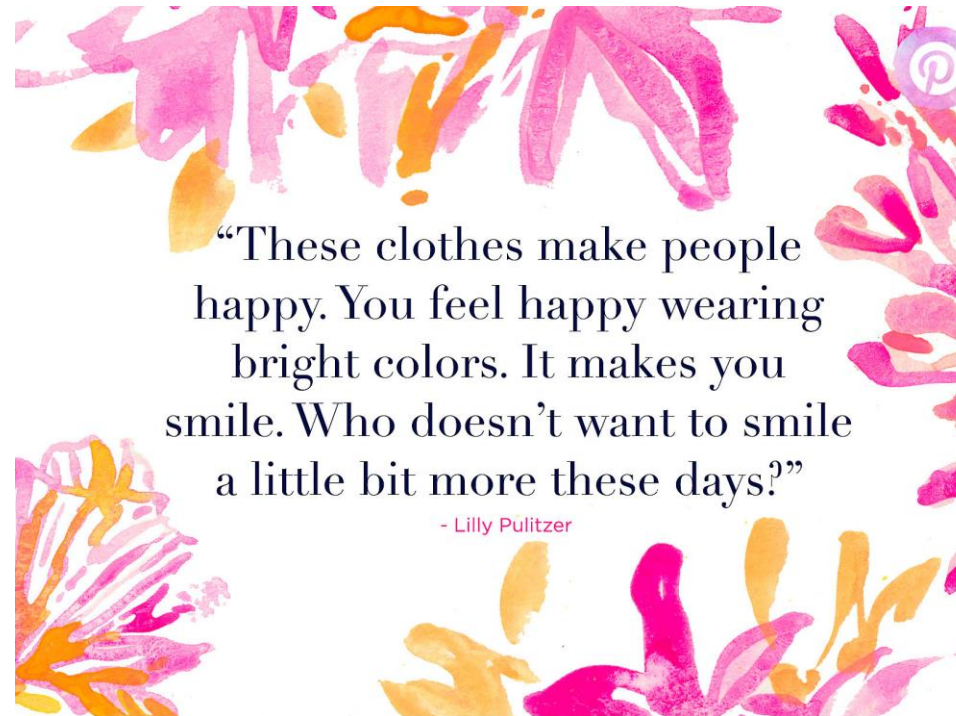
How do you change the value  
of paint?  
Exactly how did Michelangelo  
make the folds of the orange  
fabric look like they are in  
shadow?





# 17- Lily Pulitzer

Name of design:  
*Toucan Play*



What color  
harmonizes the tunic  
to the right?



# 18- Tim Burton



## Jack, Sally and Zero

1993

Medium: Pastel and Watercolor,  
Dimensions: 17 x 11"

*Drawing for Nightmare Before Christmas*

Why use blue & orange?





# 19- Sandro Botticelli

## *Birth of Venus*

1485

Medium: Pigment on canvas

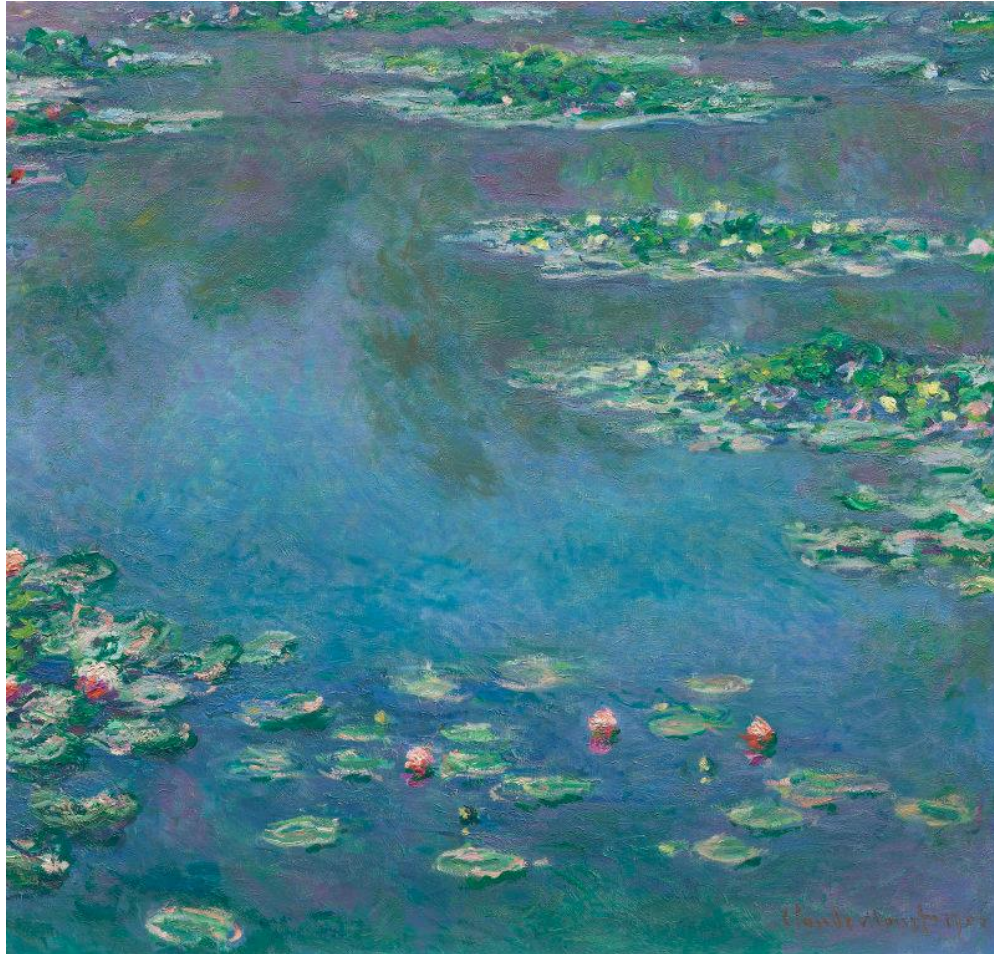
Italian Renaissance

Where has Botticelli  
chosen to use low  
intensity colors?





# 20- Claude Monet



## ***Water Lillies***

1908

French Impressionism

Medium: Oil on Canvas

Dimensions: 90 x 94"

<http://www.artic.edu/aic/collections/artwork/16568>

What kind of color scheme is this?

[Waterlillies Virtual Visit](#)

